



**REVERSING ENVIRONMENTAL DEGRADATION TRENDS
IN THE SOUTH CHINA SEA AND GULF OF THAILAND
WWW.UNEPSCS.ORG**

Use of Ichthyoplankton Survey in Fisheries Resource Management

Nygiel Armada

Regional Technical Working Group

(Fisheries)



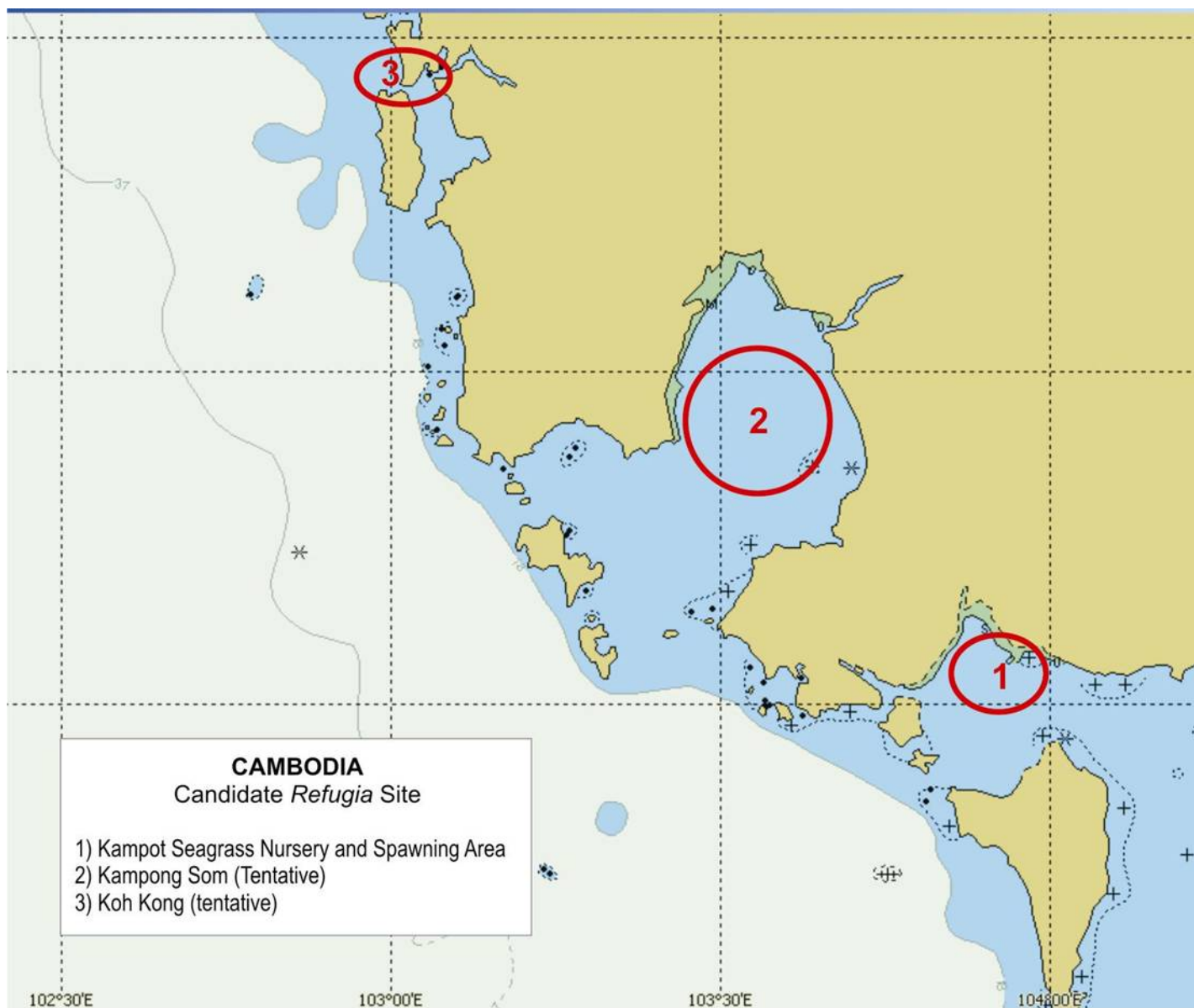
**REVERSING ENVIRONMENTAL DEGRADATION TRENDS
IN THE SOUTH CHINA SEA AND GULF OF THAILAND
WWW.UNEPSCS.ORG**

Presentation Outline

- **Establishment of fish *refugia***
- **Recruitment**
- **Ichthyoplankton survey**
- **Some practical applications**

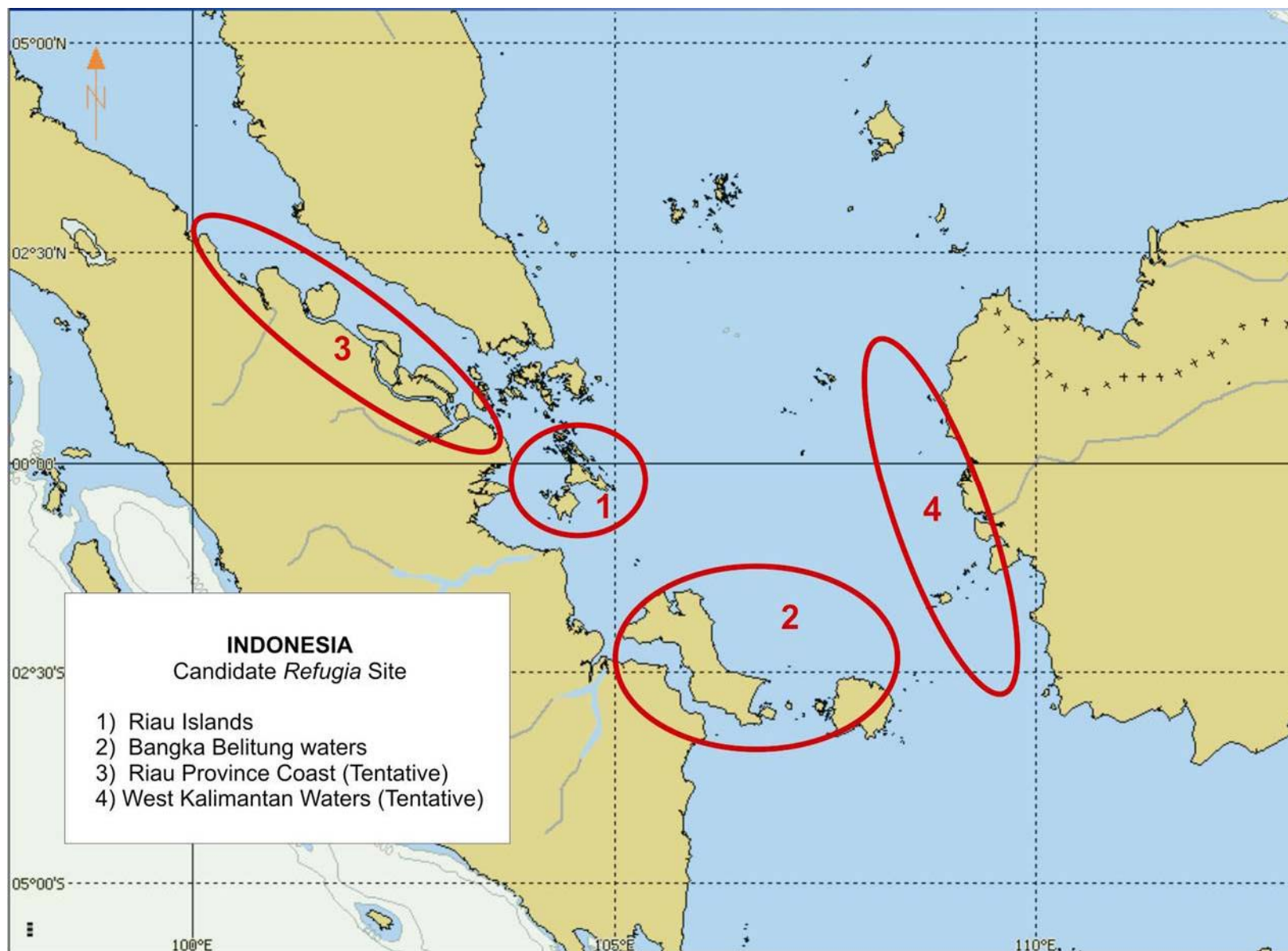


REVERSING ENVIRONMENTAL DEGRADATION TRENDS IN THE SOUTH CHINA SEA AND GULF OF THAILAND WWW.UNEPSCS.ORG





REVERSING ENVIRONMENTAL DEGRADATION TRENDS IN THE SOUTH CHINA SEA AND GULF OF THAILAND WWW.UNEPSCS.ORG





REVERSING ENVIRONMENTAL DEGRADATION TRENDS IN THE SOUTH CHINA SEA AND GULF OF THAILAND

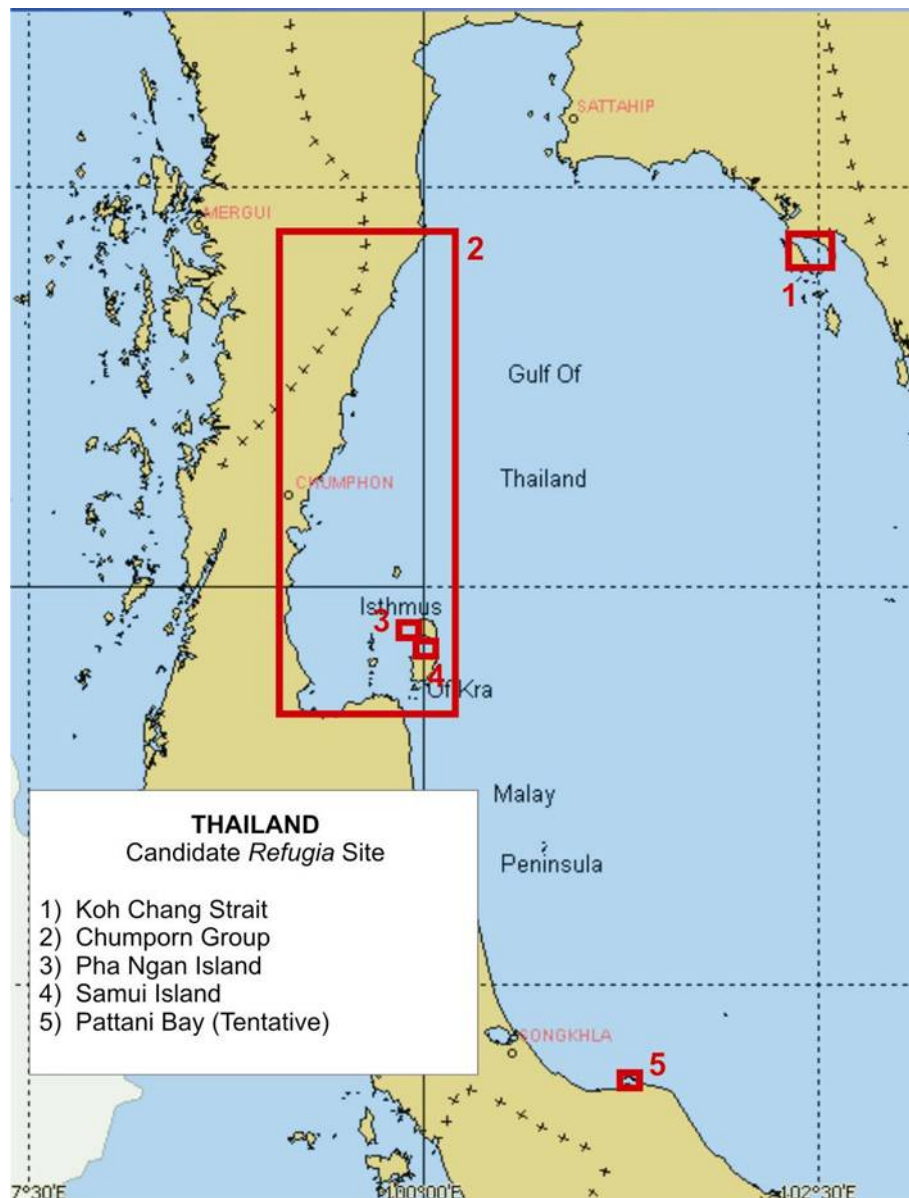
WWW.UNEPSCS.ORG





REVERSING ENVIRONMENTAL DEGRADATION TRENDS IN THE SOUTH CHINA SEA AND GULF OF THAILAND

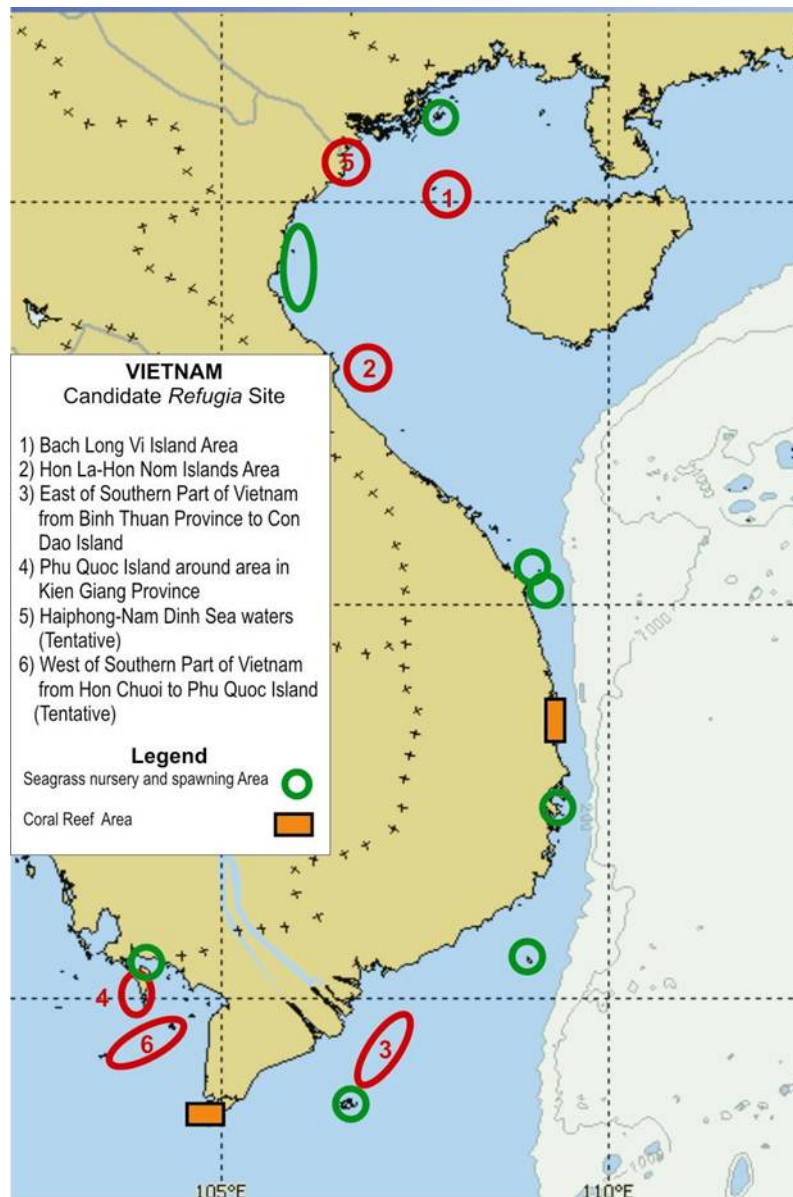
WWW.UNEPSCS.ORG





REVERSING ENVIRONMENTAL DEGRADATION TRENDS IN THE SOUTH CHINA SEA AND GULF OF THAILAND

WWW.UNEPSCS.ORG





REVERSING ENVIRONMENTAL DEGRADATION TRENDS
IN THE SOUTH CHINA SEA AND GULF OF THAILAND
WWW.UNEPSCS.ORG

Fisheries Management Intervention

Establishment of “Fish *Refugia*”

Protecting specific life stage/s of a fish stock

Enhance Recruitment

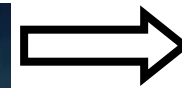
Sustainable Fisheries



REVERSING ENVIRONMENTAL DEGRADATION TRENDS
IN THE SOUTH CHINA SEA AND GULF OF THAILAND
WWW.UNEPSCS.ORG

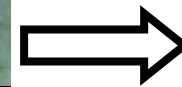
Russel's axiom (Russel 1931)

Growth →



**Natural
Death**

Recruitment →



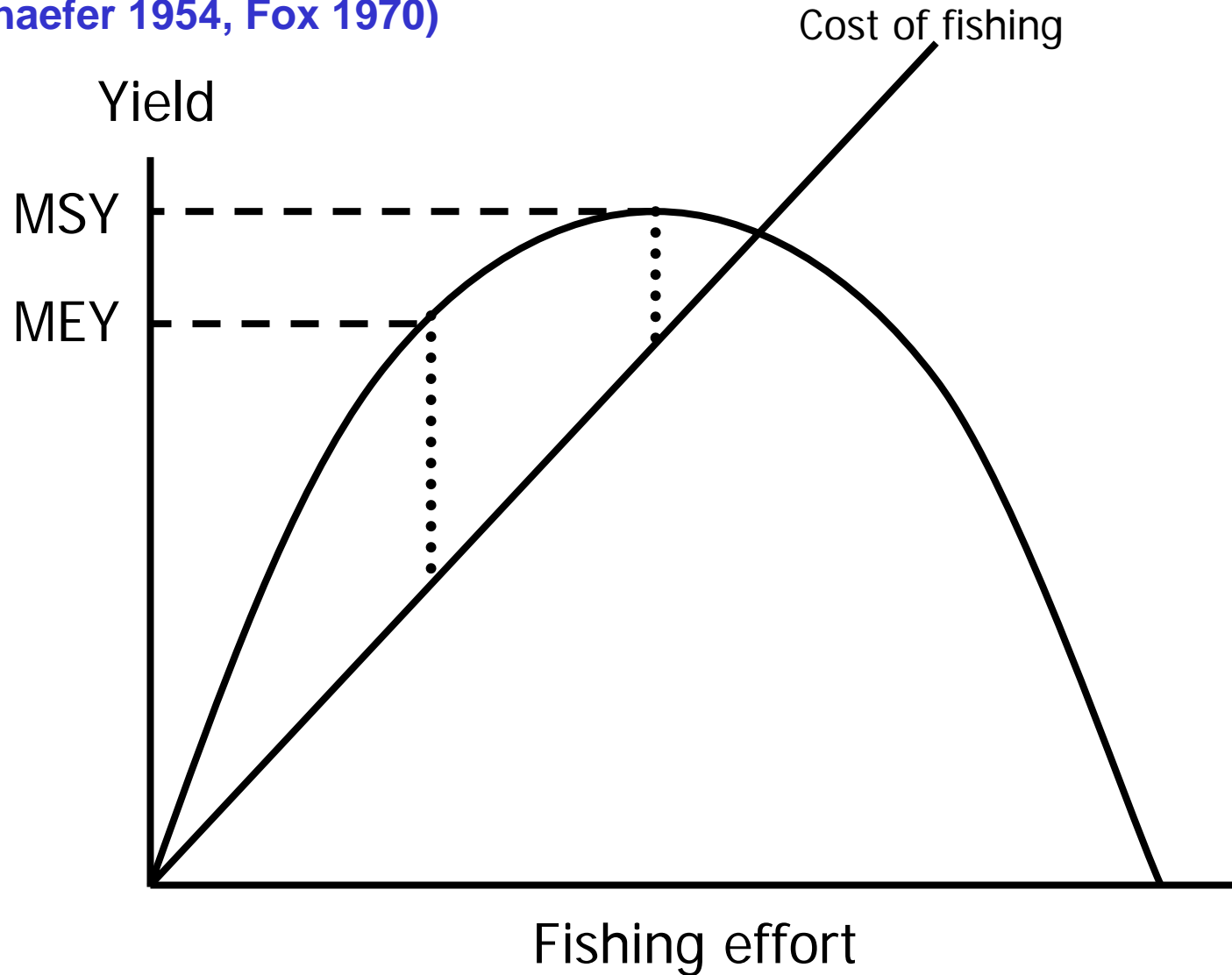
Fishing



REVERSING ENVIRONMENTAL DEGRADATION TRENDS
IN THE SOUTH CHINA SEA AND GULF OF THAILAND
WWW.UNEPSCS.ORG

Surplus production

(Schaefer 1954, Fox 1970)

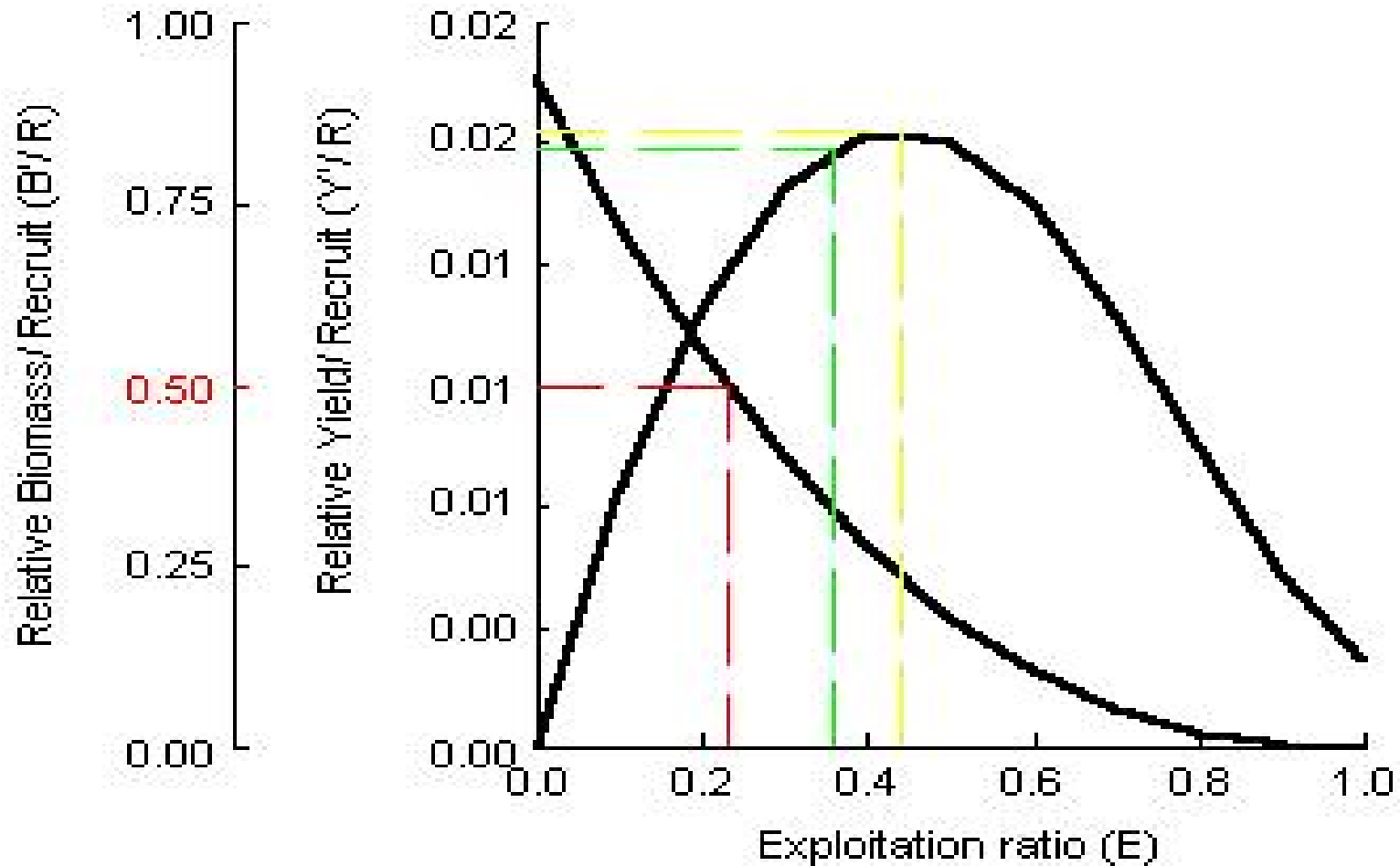




REVERSING ENVIRONMENTAL DEGRADATION TRENDS
IN THE SOUTH CHINA SEA AND GULF OF THAILAND
WWW.UNEPSCS.ORG

Yield per recruit analysis

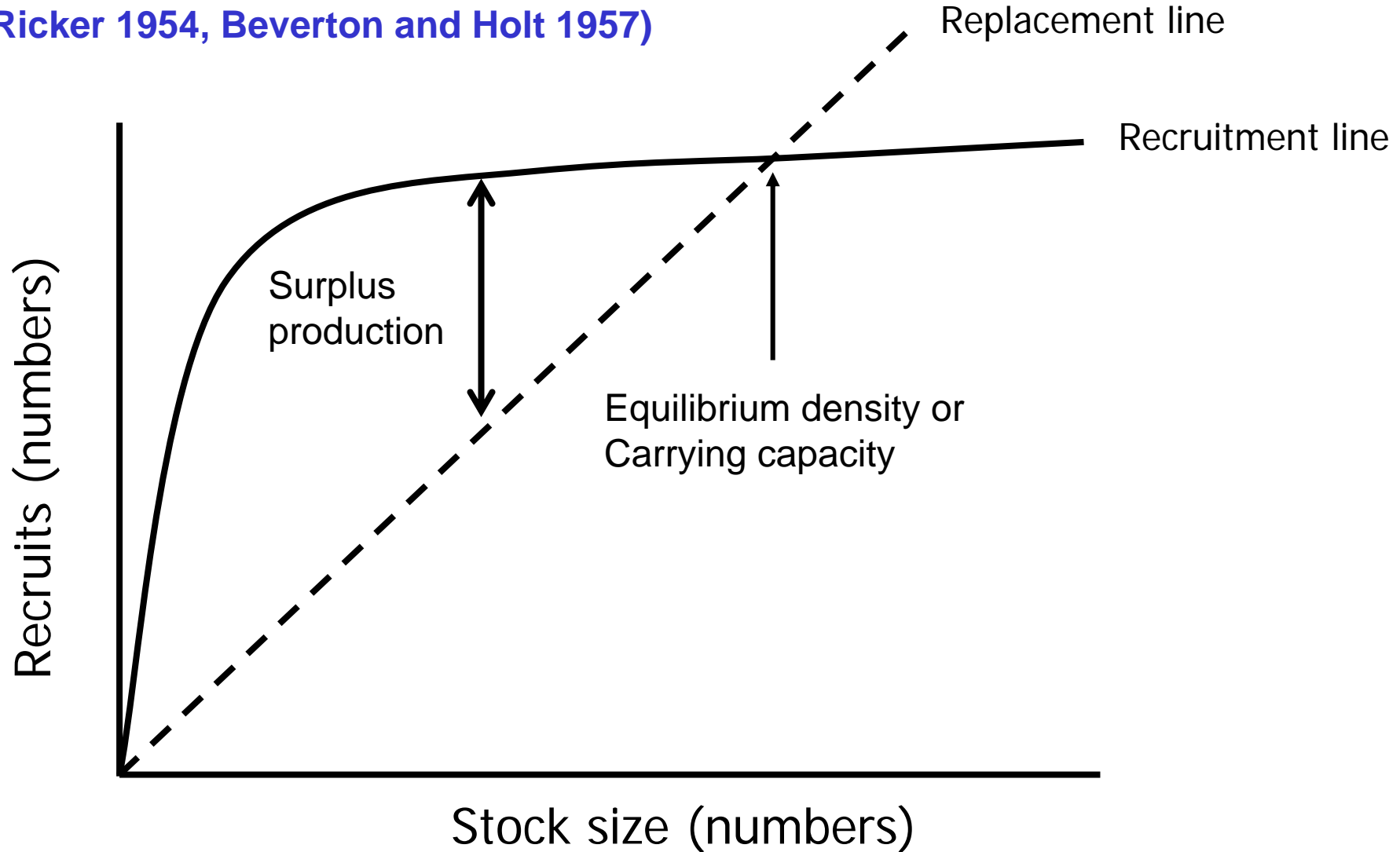
(Beverton and Holt 1957)





Stock-Recruitment curve

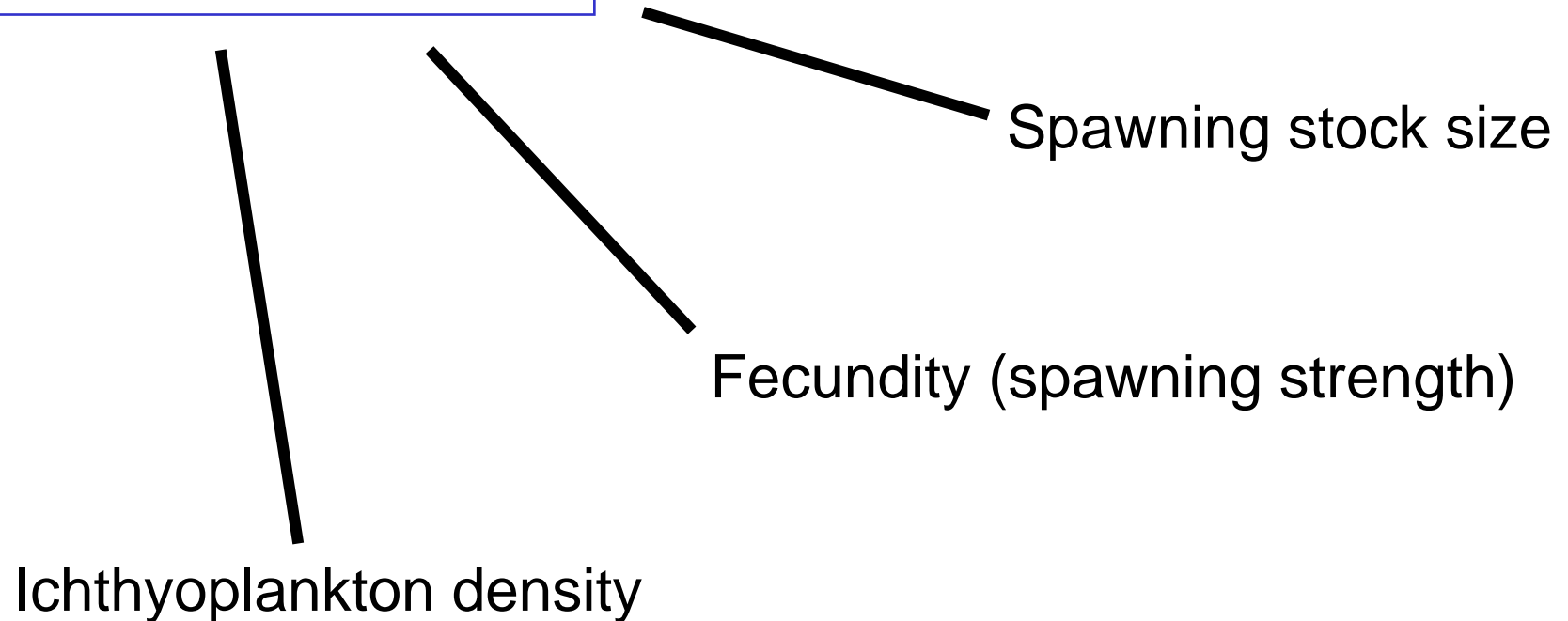
(Ricker 1954, Beverton and Holt 1957)





**REVERSING ENVIRONMENTAL DEGRADATION TRENDS
IN THE SOUTH CHINA SEA AND GULF OF THAILAND
WWW.UNEPSCS.ORG**

Recruitment





**REVERSING ENVIRONMENTAL DEGRADATION TRENDS
IN THE SOUTH CHINA SEA AND GULF OF THAILAND
WWW.UNEPSCS.ORG**

Ichthyoplankton survey

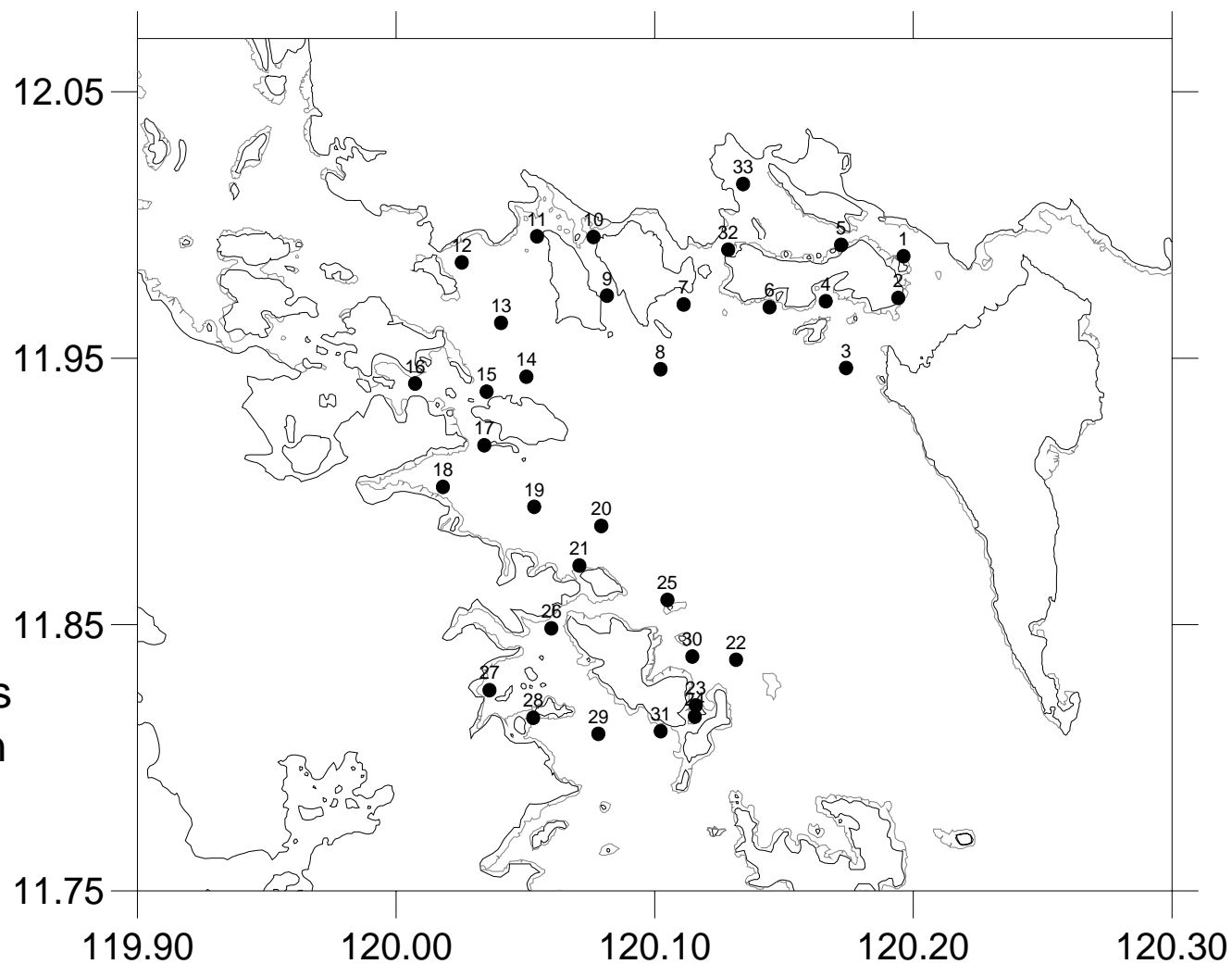
Provides information on potential recruits:

- What species of fish?**
- Where they are found?**
- How many (density)?**
- Seasonal fluctuations?**



**REVERSING ENVIRONMENTAL DEGRADATION TRENDS
IN THE SOUTH CHINA SEA AND GULF OF THAILAND
WWW.UNEPSCS.ORG**

**Plankton
stations**



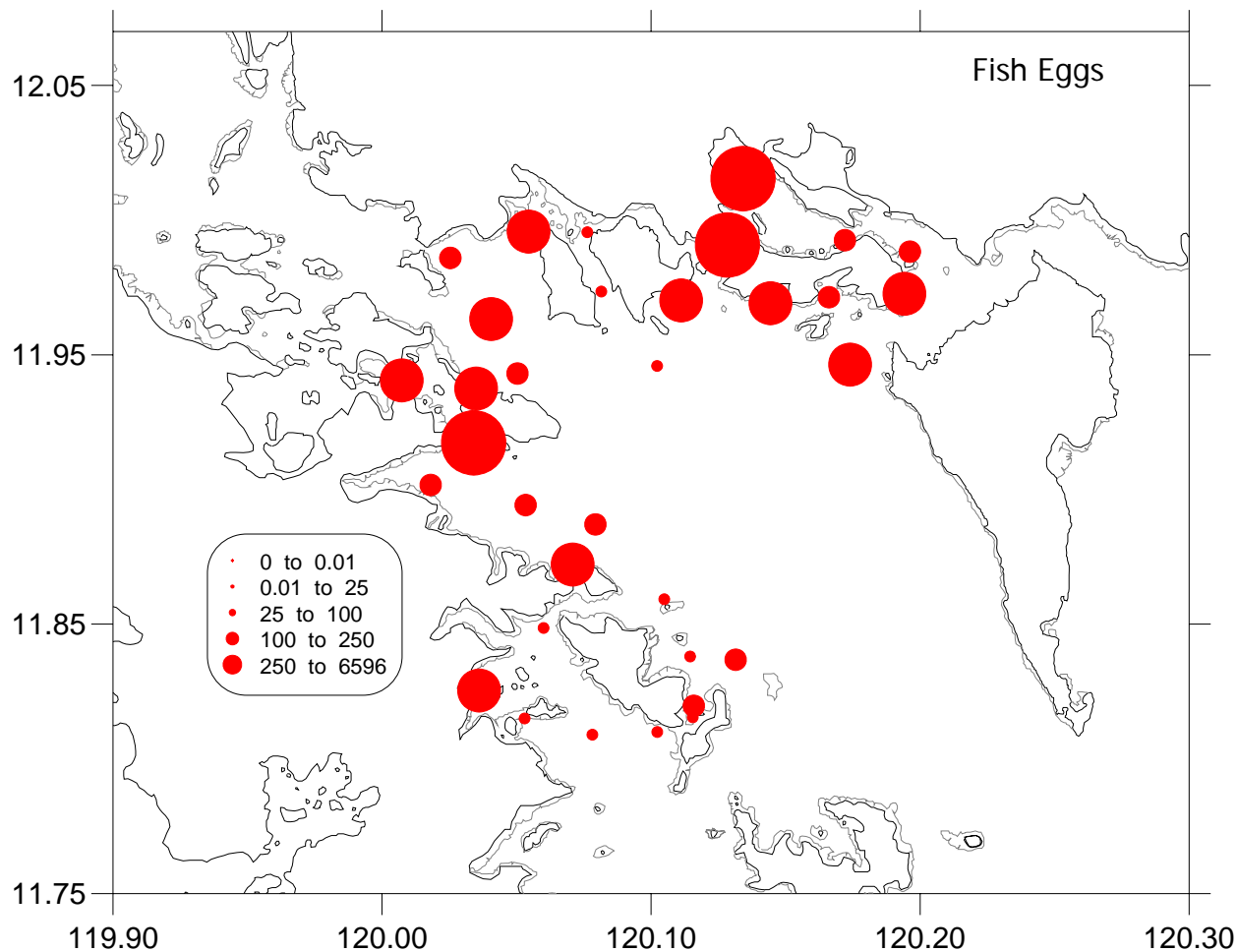
Map of plankton stations
in Calamianes, Palawan
in May 2004 (Campos
2004)



REVERSING ENVIRONMENTAL DEGRADATION TRENDS IN THE SOUTH CHINA SEA AND GULF OF THAILAND WWW.UNEPSCS.ORG

Fish eggs distribution

Density (no./100m³)
distribution of fish eggs
in Coron Bay in April
2004 (Campos 2004)

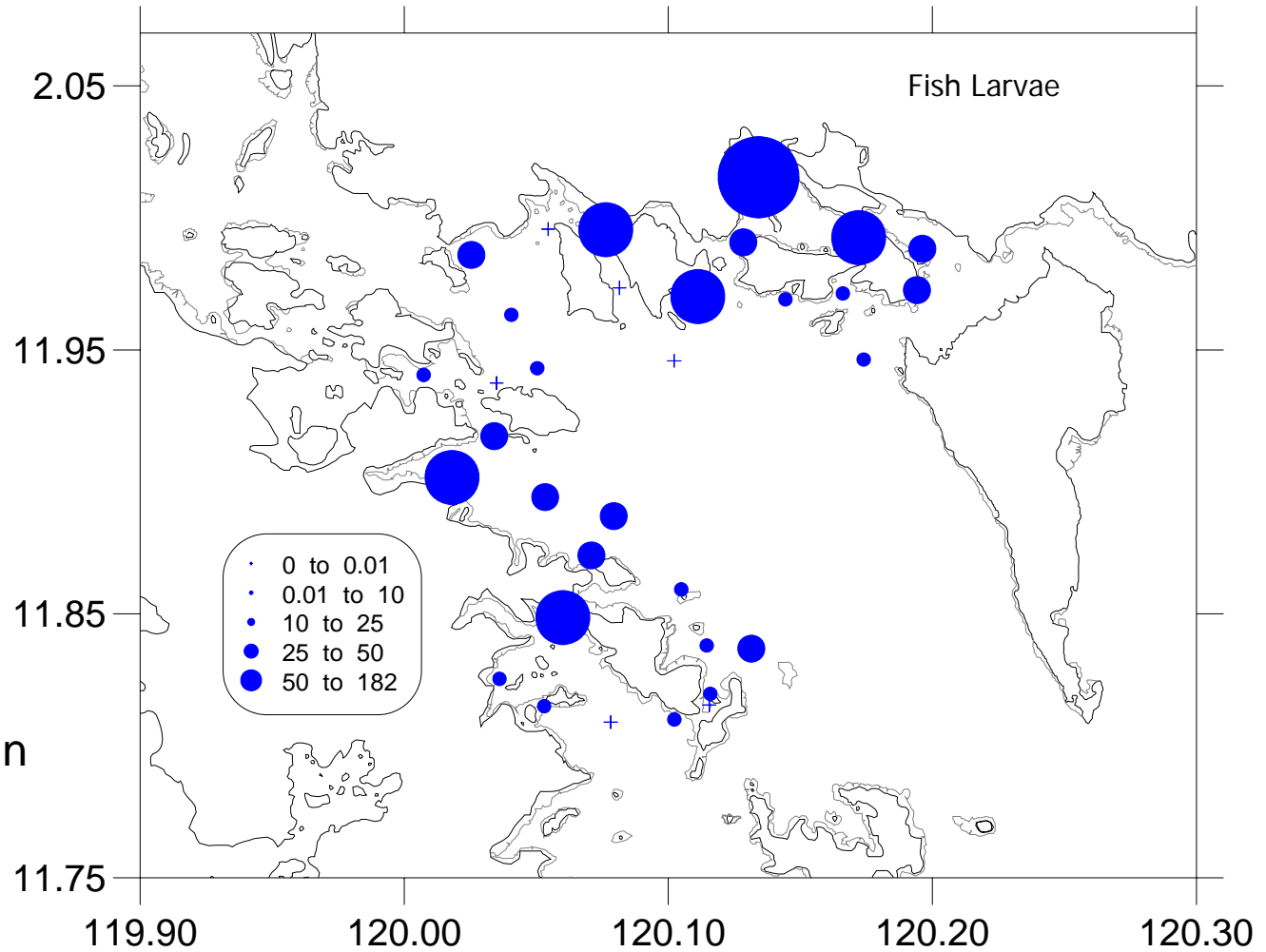




REVERSING ENVIRONMENTAL DEGRADATION TRENDS IN THE SOUTH CHINA SEA AND GULF OF THAILAND WWW.UNEPSCS.ORG

Fish larvae distribution

Density (ind./100m³)
distribution of fish
larvae in Coron Bay in
April 2004. (Campos
2004)

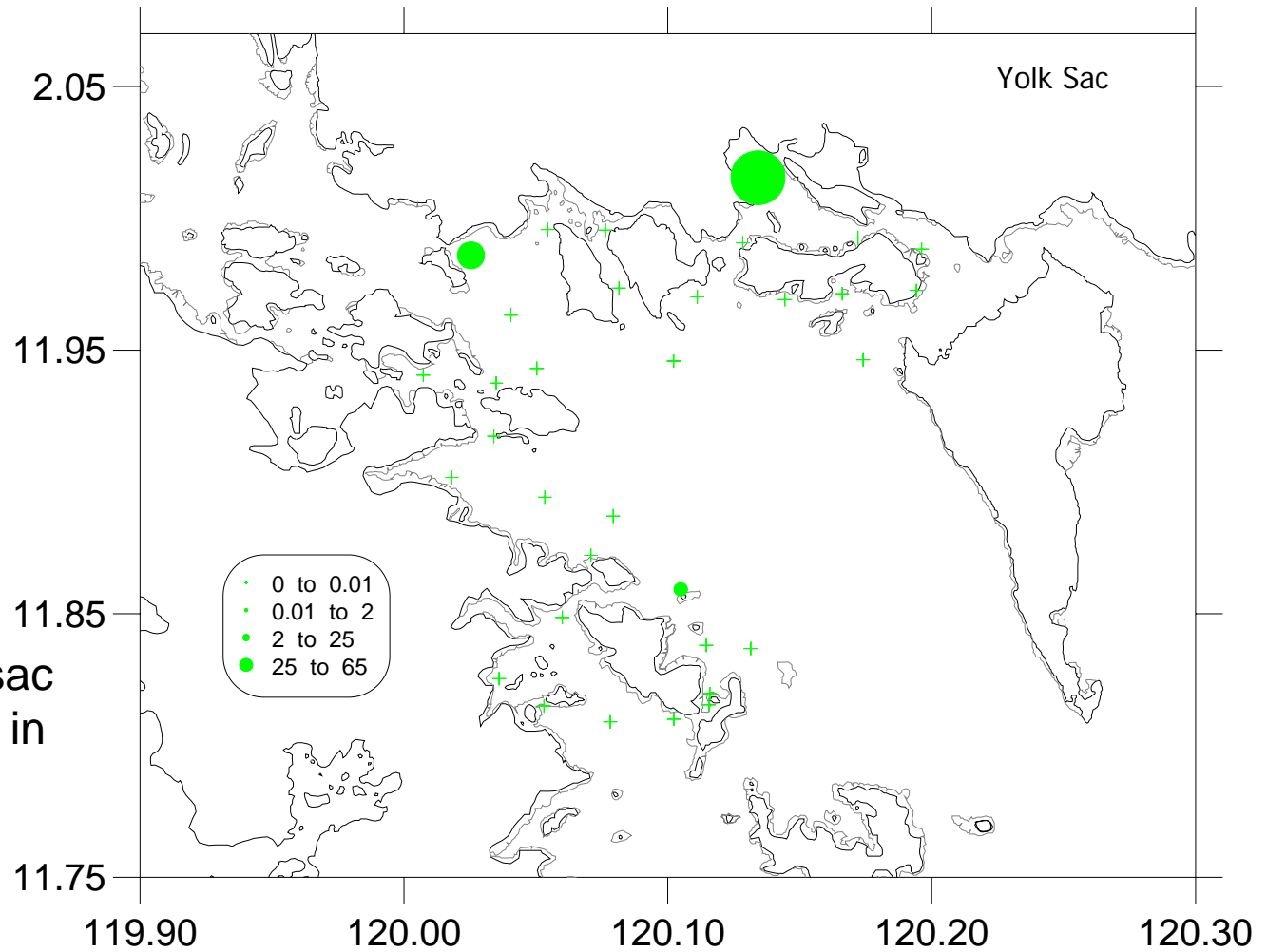




**REVERSING ENVIRONMENTAL DEGRADATION TRENDS
IN THE SOUTH CHINA SEA AND GULF OF THAILAND
WWW.UNEPSCS.ORG**

**Yolk sac larvae
distribution**

Distribution of yolk sac larvae in Coron Bay in April 2004 (Campos 2004)





REVERSING ENVIRONMENTAL DEGRADATION TRENDS IN THE SOUTH CHINA SEA AND GULF OF THAILAND

WWW.UNEPSCS.ORG

Fish larvae composition

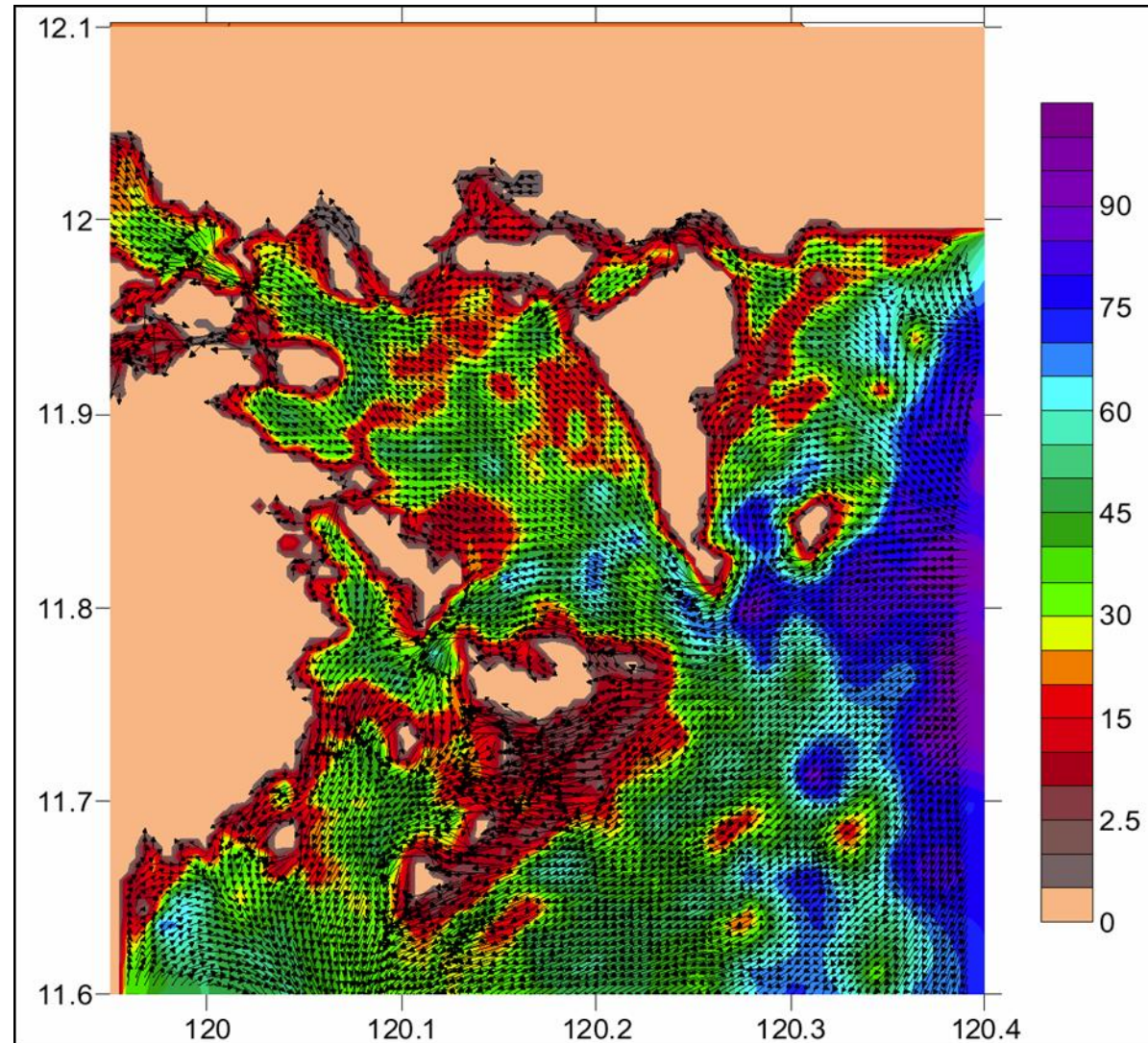
Larvae Families	Larval Density (ind/100m ³)	Standard deviation	Relative Abundance (%)
Gobiidae	4.99	12.68	29.4
Mullidae	2.58	5.39	15.2
Pomacentridae	1.33	3.98	7.8
Scombridae	1.07	1.78	6.3
Atherinidae	0.98	3.23	5.8
Terapontidae	0.87	2.61	5.1
Blenniidae	0.63	1.54	3.7
Monacanthidae	0.41	1.64	2.4
Cynoglossidae	0.35	2.04	2.1
Sphyraenidae	0.21	0.73	1.2
Labridae	0.20	0.85	1.2
Clupeidae	0.13	0.58	0.8
Callionymidae	0.13	0.41	0.7
Sillaginidae	0.12	0.72	0.7
Apogonidae	0.06	0.37	0.4
Lethrinidae	0.06	0.37	0.4
Engraulidae	0.05	0.27	0.3
Carangidae	0.05	0.27	0.3
Trichiuridae	0.05	0.27	0.3
Gerreidae	0.04	0.24	0.24
Polynemidae	0.04	0.24	0.24
Priacanthidae	0.04	0.20	0.21



**REVERSING ENVIRONMENTAL DEGRADATION TRENDS
IN THE SOUTH CHINA SEA AND GULF OF THAILAND
WWW.UNEPSCS.ORG**

**Circulation
pattern**

General tidal
circulation in Coron
Bay (Villanoy 2006).

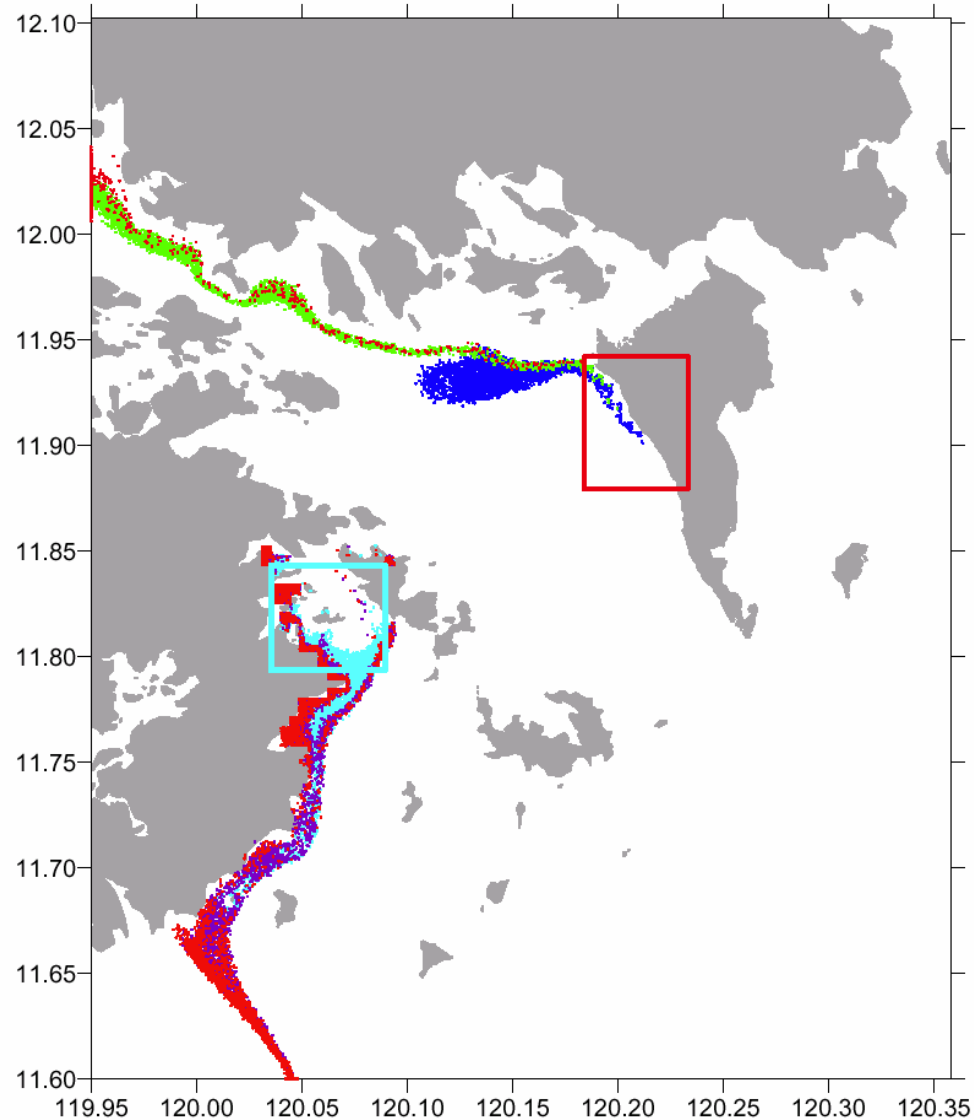




**REVERSING ENVIRONMENTAL DEGRADATION TRENDS
IN THE SOUTH CHINA SEA AND GULF OF THAILAND
WWW.UNEPSCS.ORG**

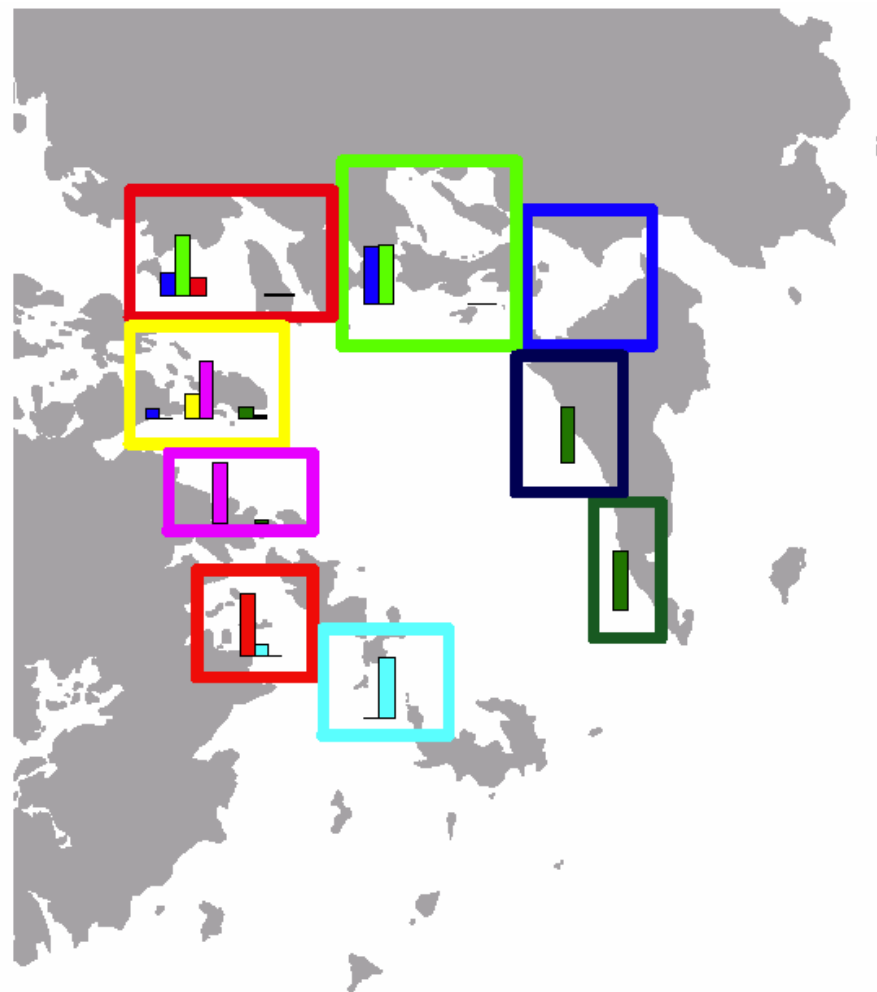
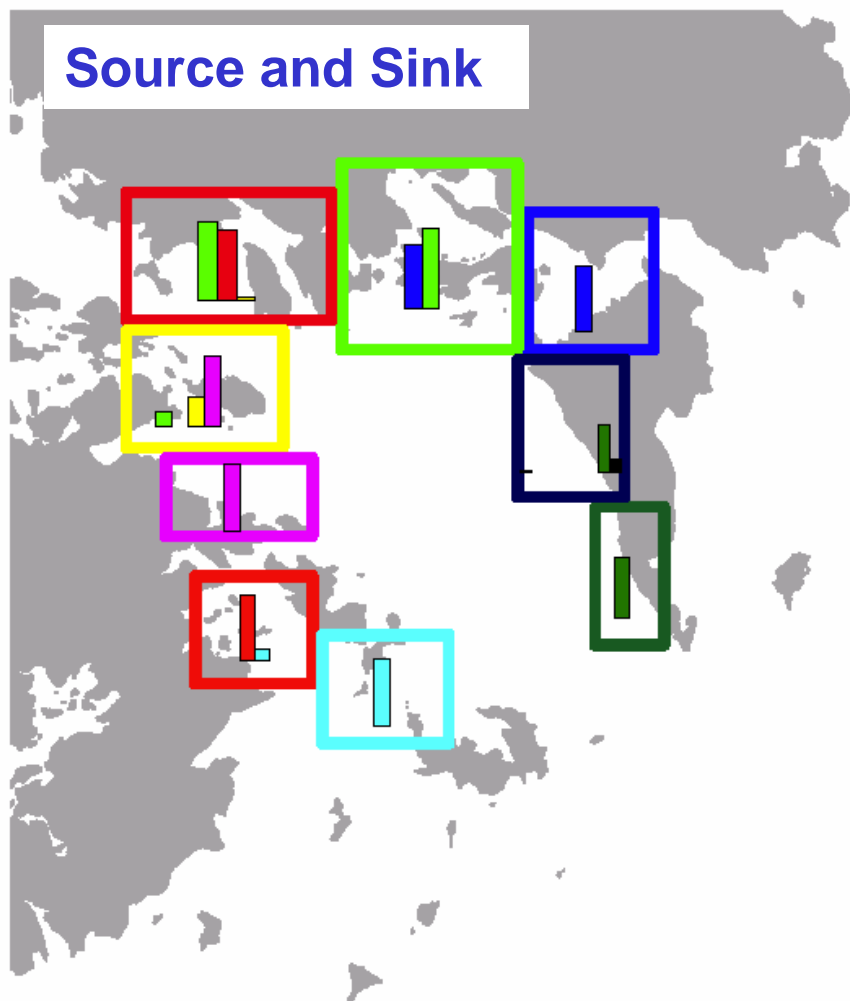
**Dispersal
simulation**

Simulation of
dispersal in Coron
Bay (Villanoy 2006).





REVERSING ENVIRONMENTAL DEGRADATION TRENDS IN THE SOUTH CHINA SEA AND GULF OF THAILAND WWW.UNEPSCS.ORG



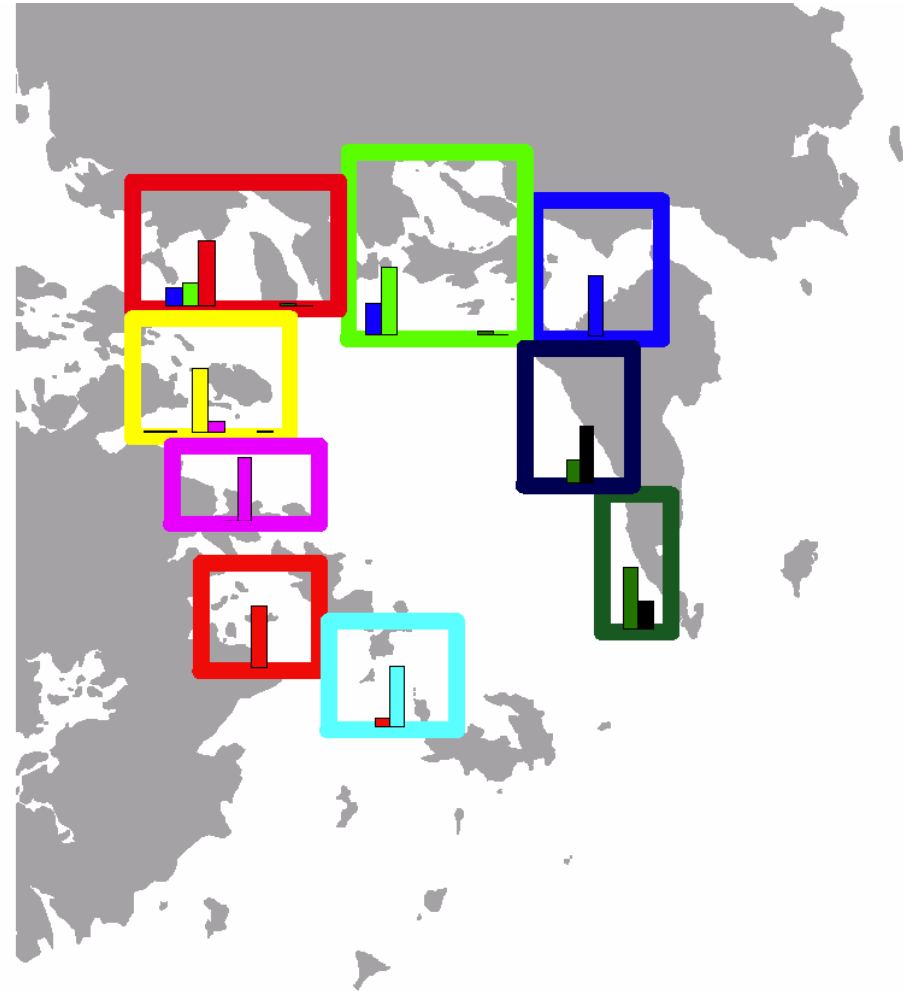
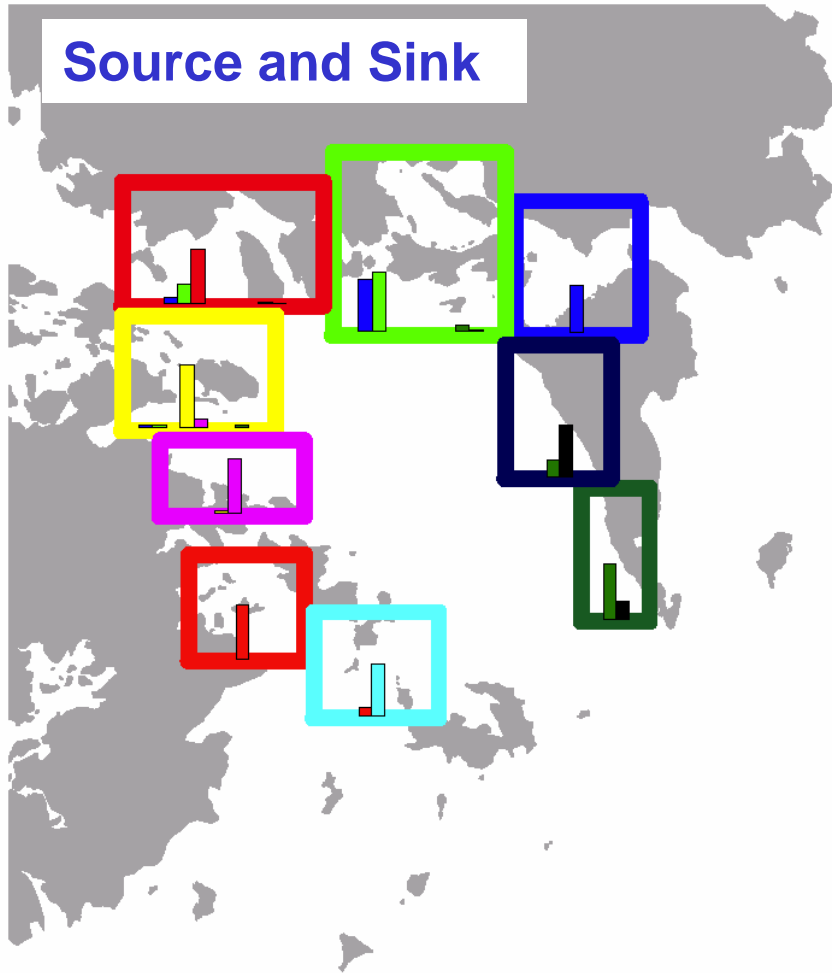
April Dispersal

Source areas and relative amounts of dispersed particles settling in each of the areas marked by the colored boxes. Colored bars within each box represent the sources of the particles that settled in a particular box. L= 20 days, R=30 days. (Villanoy, 2006)



REVERSING ENVIRONMENTAL DEGRADATION TRENDS IN THE SOUTH CHINA SEA AND GULF OF THAILAND WWW.UNEPSCS.ORG

Source and Sink



January Dispersal

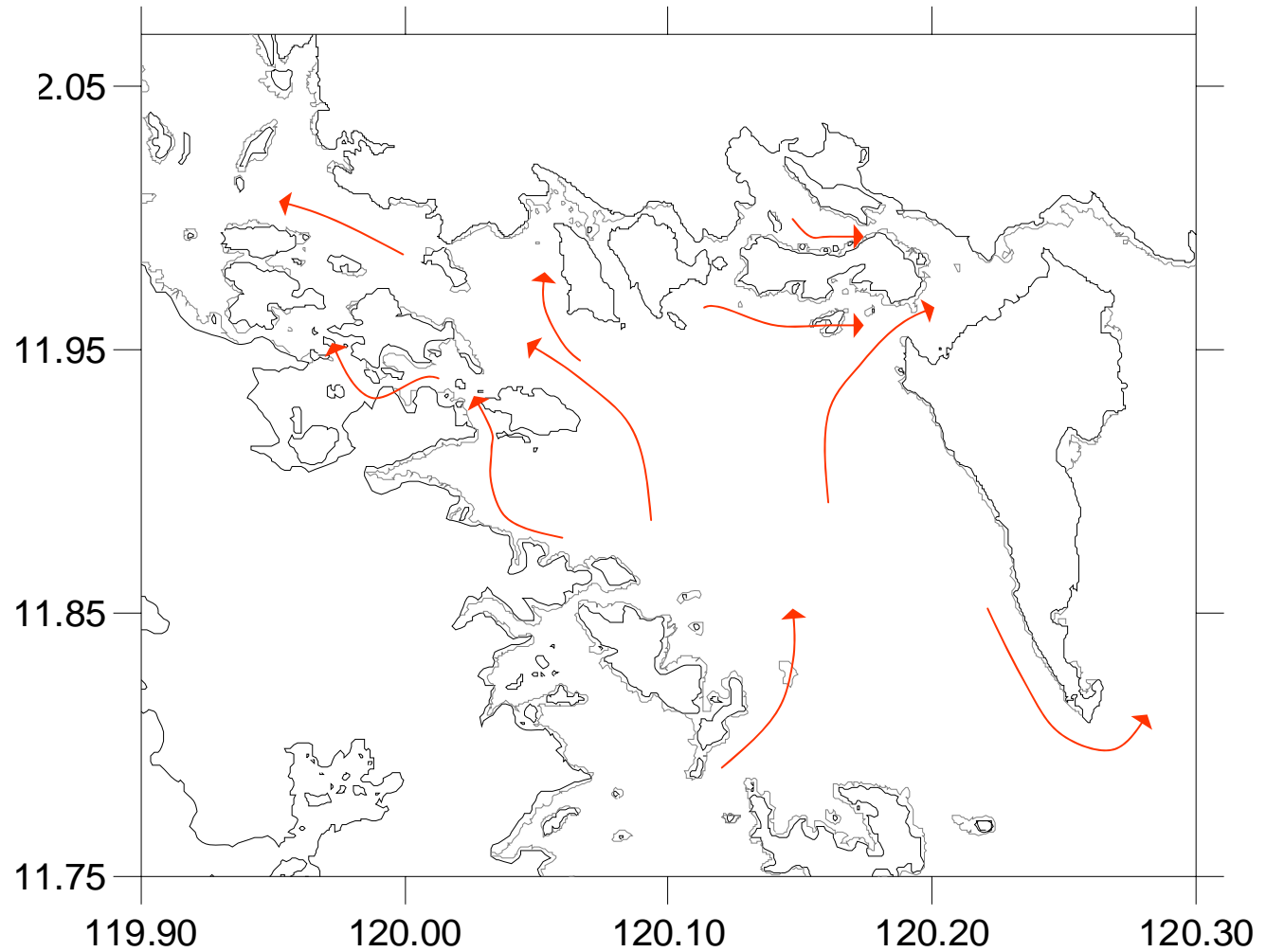
Sink areas and relative amounts of particles dispersed from each of the areas marked by the colored boxes. Colored bars within each box represent where the particles released from a source box ended up. L=20 days, R=30 days.



REVERSING ENVIRONMENTAL DEGRADATION TRENDS IN THE SOUTH CHINA SEA AND GULF OF THAILAND WWW.UNEPSCS.ORG

Simulated dispersal

Simulated dispersal
resulting from tidal
circulation in Coron
Bay (Villanoy 2006).



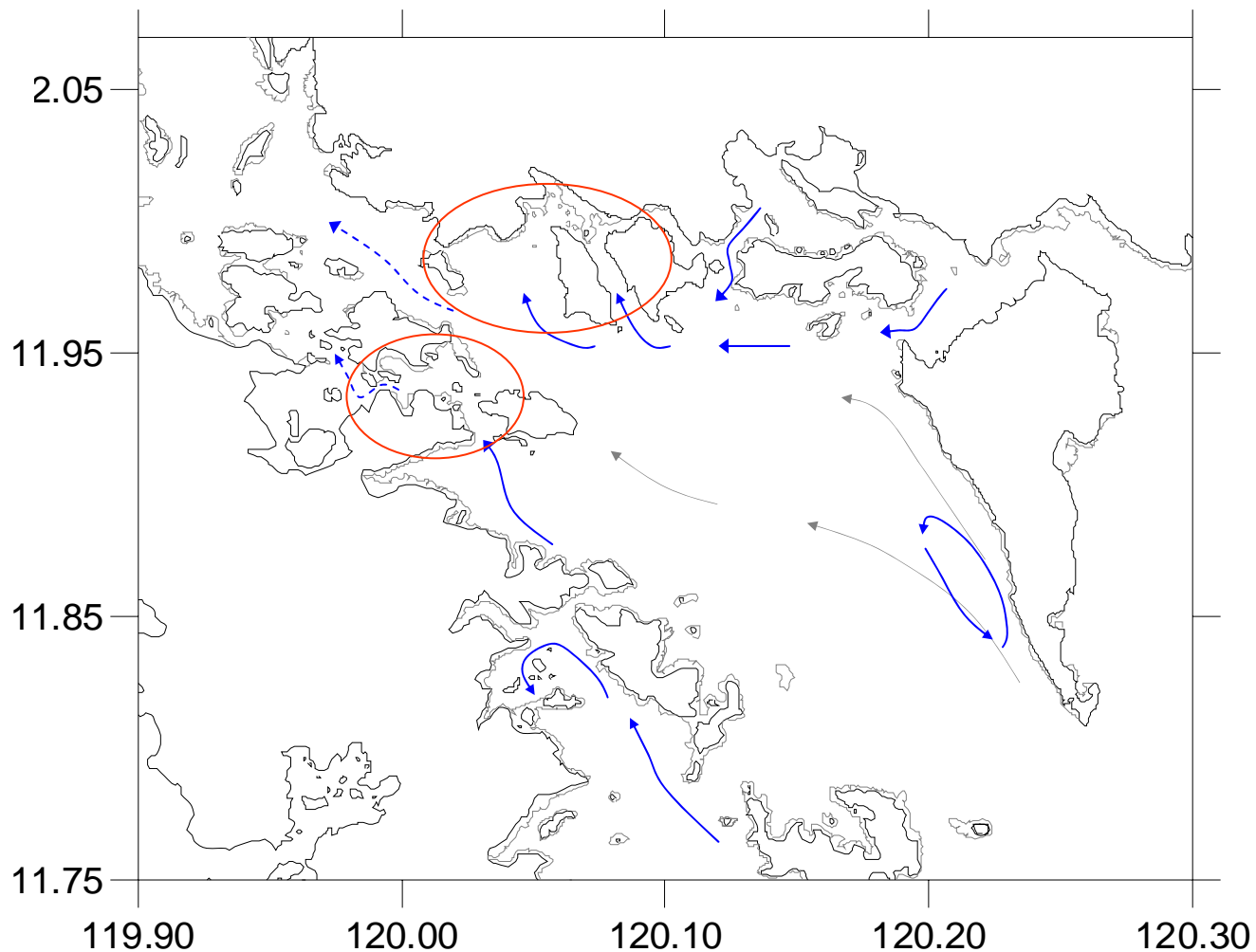


REVERSING ENVIRONMENTAL DEGRADATION TRENDS IN THE SOUTH CHINA SEA AND GULF OF THAILAND WWW.UNEPSCS.ORG

Simulated dispersal

Simulated dispersal with wind effects typical of April (Villanoy 2006).

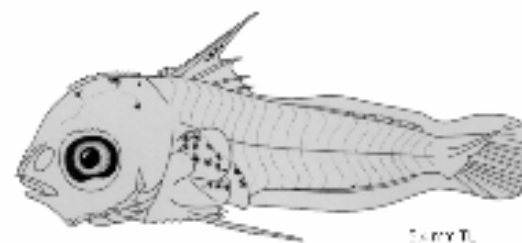
Red ellipses indicate areas where settled particles originate from several sources. Grey lines indicate possible but weak dispersal, apparent only after 30 days.



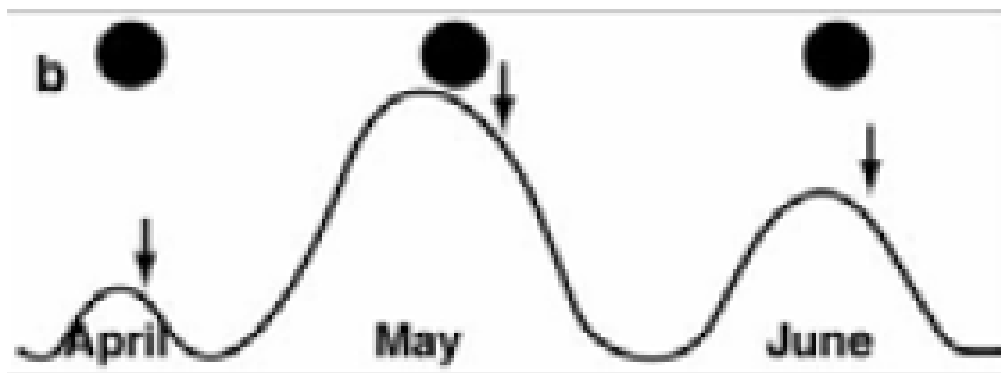


REVERSING ENVIRONMENTAL DEGRADATION TRENDS
IN THE SOUTH CHINA SEA AND GULF OF THAILAND
WWW.UNEPSCS.ORG

Observing closed season for rabbit fish, *Siganus canaliculatus*



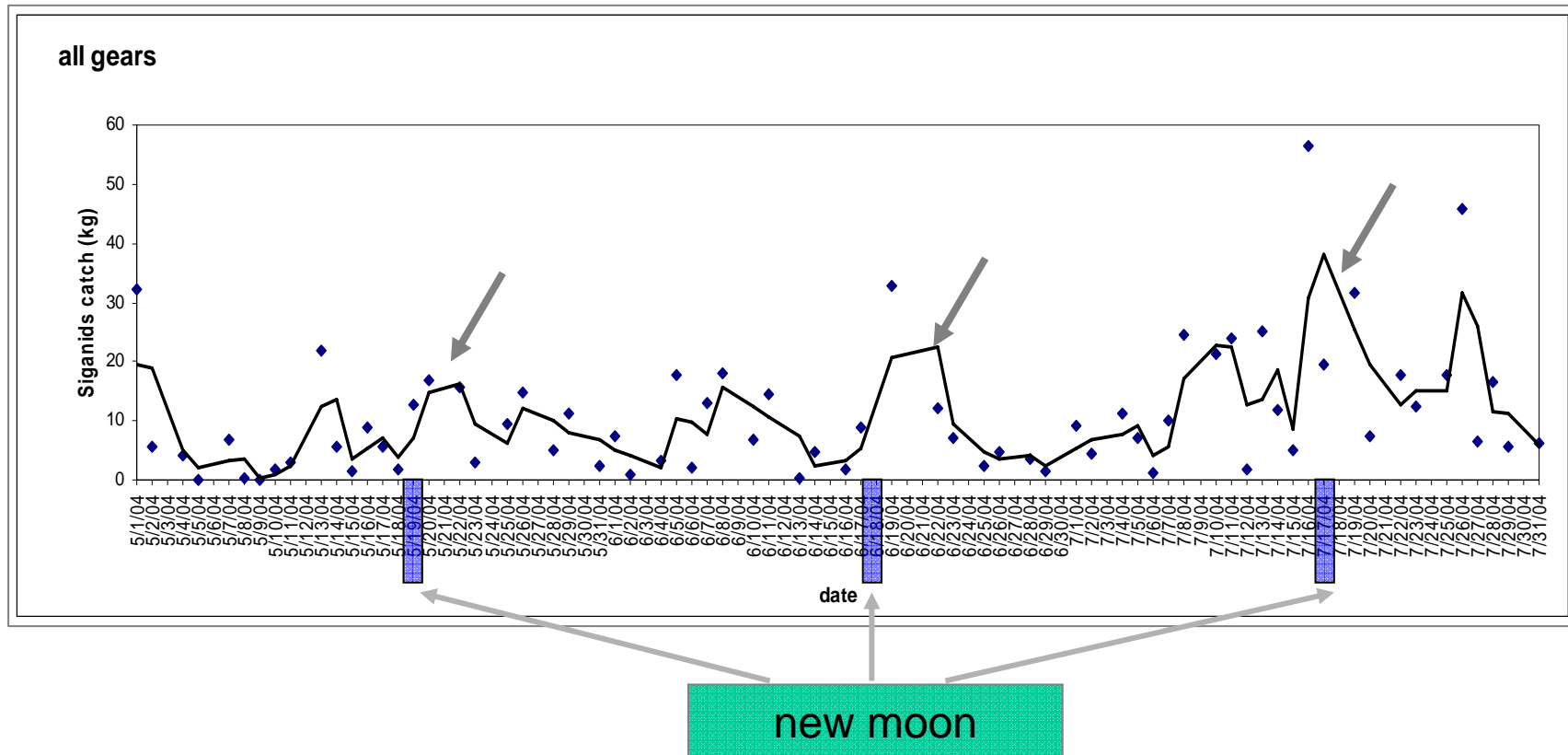
S. fuscescens (Source: American Society of Ichthyologists and Herpetologists)





REVERSING ENVIRONMENTAL DEGRADATION TRENDS
 IN THE SOUTH CHINA SEA AND GULF OF THAILAND
 WWW.UNEPSCS.ORG

Observing closed season for rabbit fish, *Siganus canaliculatus*



Catch monitoring data from various gears catching rabbit fish in Danajon Bank from May to July 2004

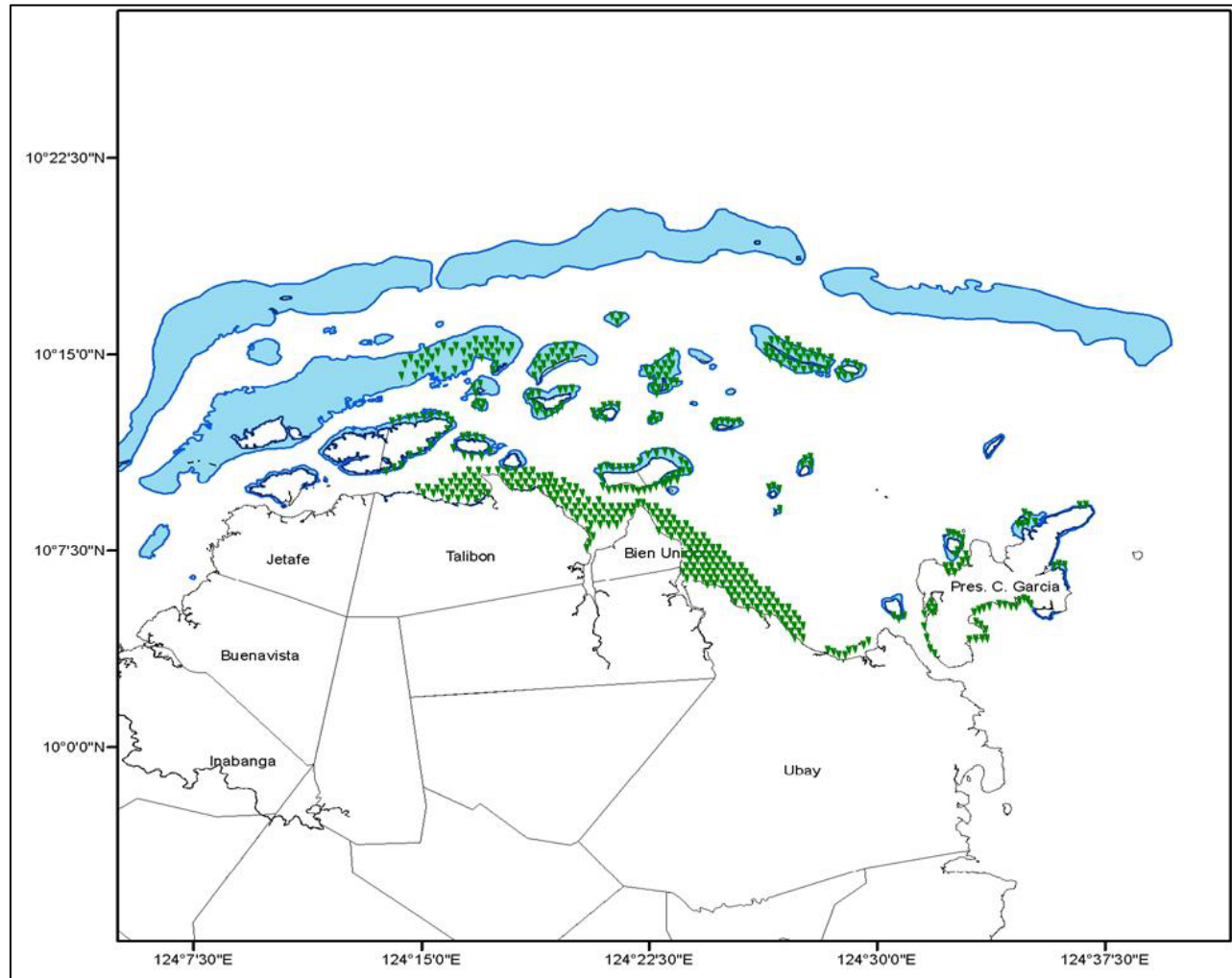


REVERSING ENVIRONMENTAL DEGRADATION TRENDS
IN THE SOUTH CHINA SEA AND GULF OF THAILAND
WWW.UNEPSCS.ORG

Major seagrass areas

Closed Season:

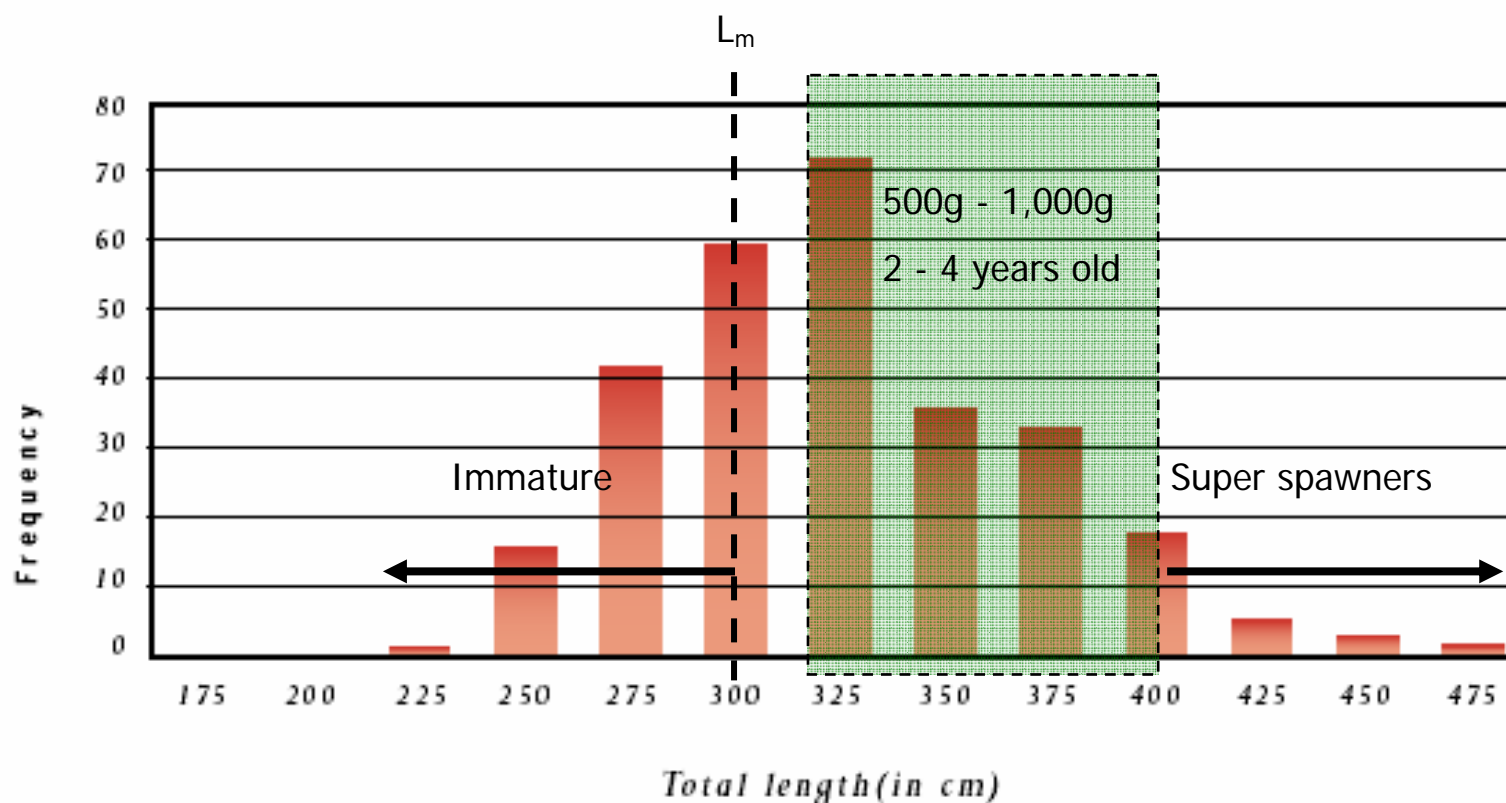
- In seagrass areas
- 4th, 5th, 6th nights after the new moon
- March, April & May





REVERSING ENVIRONMENTAL DEGRADATION TRENDS
IN THE SOUTH CHINA SEA AND GULF OF THAILAND
WWW.UNEPSCS.ORG

Closed season for red grouper, *Plectropomus leopardus*

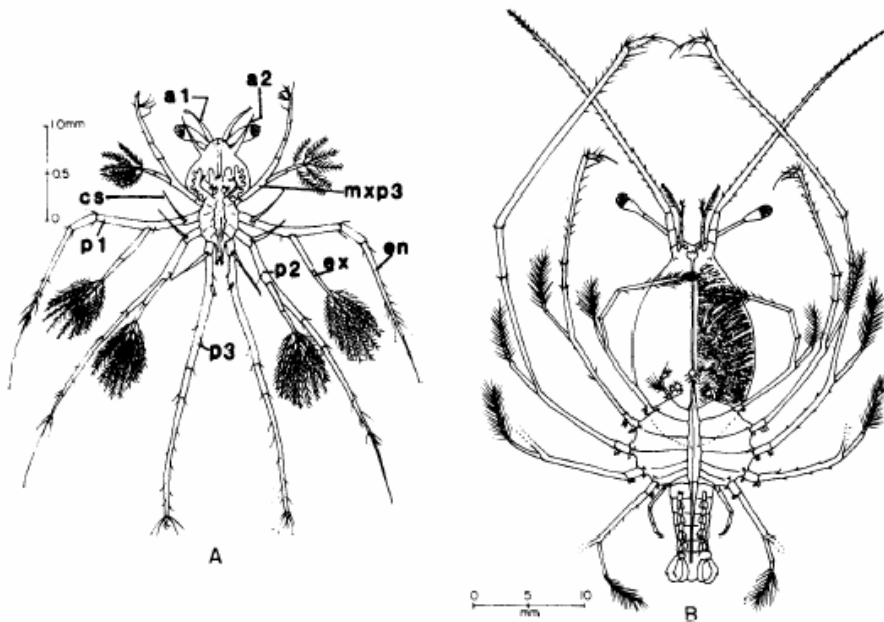


Length frequency distribution of *Plectropomus leopardus* in Calamianes in 1998 (Mamauag *et al.* 2002)



REVERSING ENVIRONMENTAL DEGRADATION TRENDS
IN THE SOUTH CHINA SEA AND GULF OF THAILAND
WWW.UNEPSCS.ORG

Ban on harvest of berried lobster



Panulirus larva, (A) Stage I and (B) Stage IX



REVERSING ENVIRONMENTAL DEGRADATION TRENDS
IN THE SOUTH CHINA SEA AND GULF OF THAILAND
WWW.UNEPSCS.ORG

Alternative sampling gears

- Beach seine
- Push net
- Fry gathering net



**REVERSING ENVIRONMENTAL DEGRADATION TRENDS
IN THE SOUTH CHINA SEA AND GULF OF THAILAND
WWW.UNEPSCS.ORG**

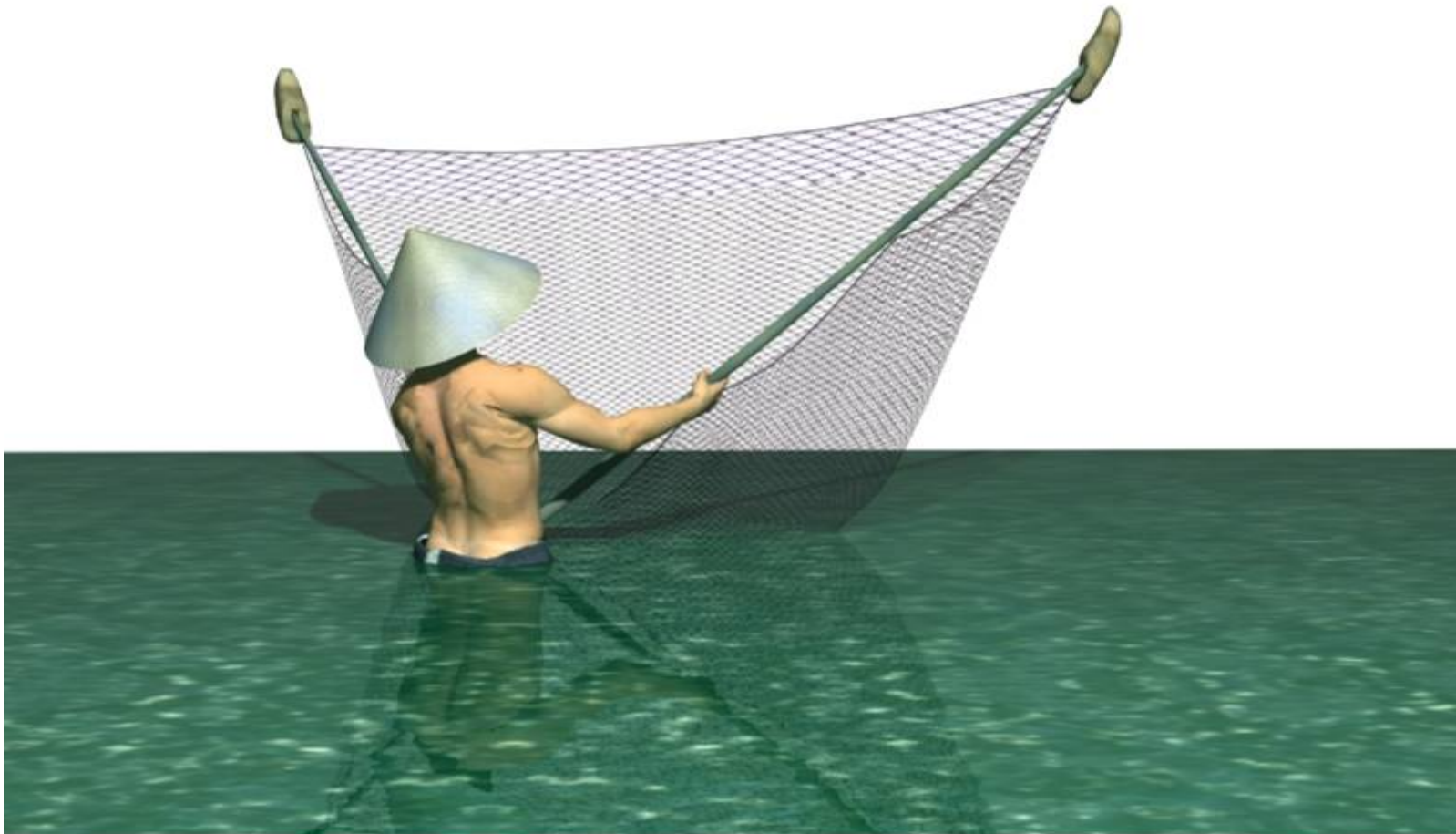
Beach seine





**REVERSING ENVIRONMENTAL DEGRADATION TRENDS
IN THE SOUTH CHINA SEA AND GULF OF THAILAND
WWW.UNEPSCS.ORG**

Push net





**REVERSING ENVIRONMENTAL DEGRADATION TRENDS
IN THE SOUTH CHINA SEA AND GULF OF THAILAND
WWW.UNEPSCS.ORG**

Fry net





**REVERSING ENVIRONMENTAL DEGRADATION TRENDS
IN THE SOUTH CHINA SEA AND GULF OF THAILAND
WWW.UNEPSCS.ORG**

Catch of beach seine





**REVERSING ENVIRONMENTAL DEGRADATION TRENDS
IN THE SOUTH CHINA SEA AND GULF OF THAILAND
WWW.UNEPSCS.ORG**

Catch of push net

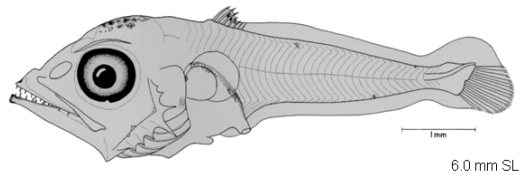




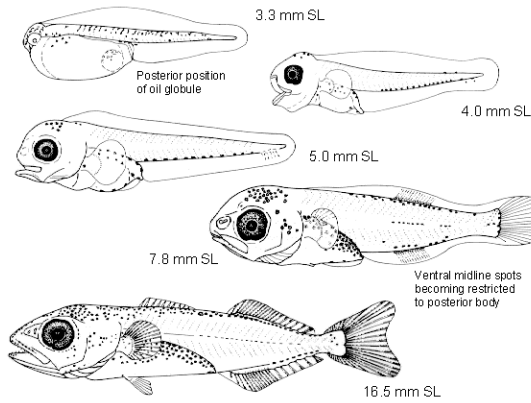
REVERSING ENVIRONMENTAL DEGRADATION TRENDS IN THE SOUTH CHINA SEA AND GULF OF THAILAND

WWW.UNEPSCS.ORG

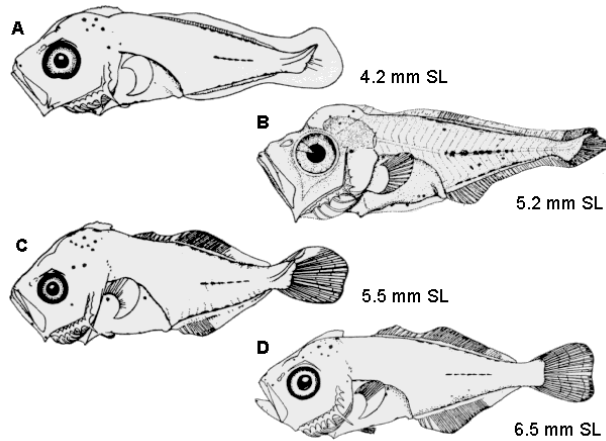
Species of interest



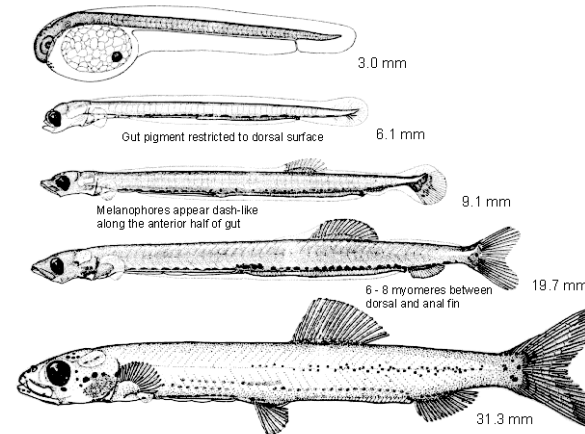
Tuna



Scombrids



Carangids



Sardines